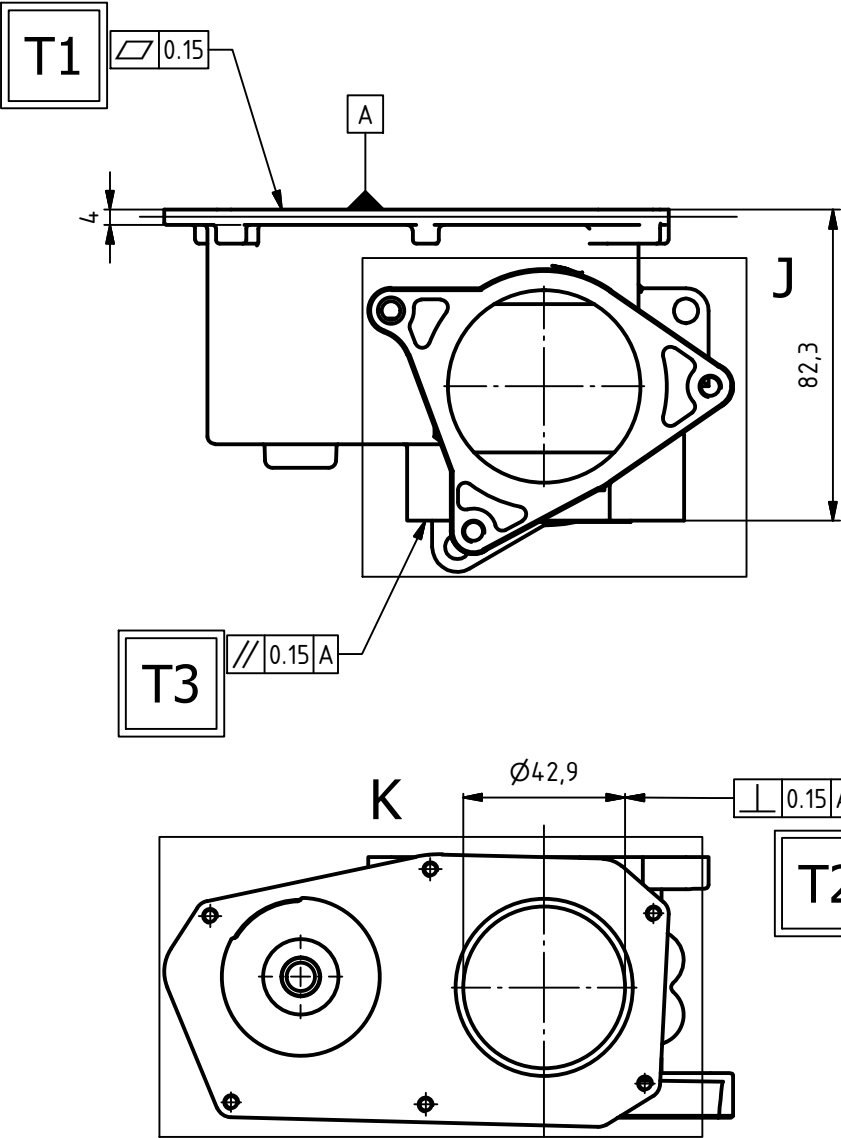
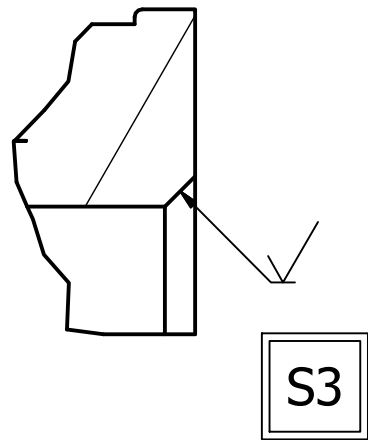


N ( 2 : 1 )



D1

D2

D13

D14

D15

D16

D17

D3

D4

D5

D6

D7

D8

D9

D10

D11

D18



D20

D19

1. General tolerance  $\pm 0,1$
2. Surface texture acc. to DIN ISO 1302
3. Edges of working parts acc. to DIN ISO 6784
4. Tolerance of form and position acc to DIN ISO 1101 METRIC
5. Undefined radii are 3 mm

Material: ALUMINUM 6061

$\sqrt{Ra\ 3,2}$   $\sqrt{0,3}$   $\sqrt{+0,4}$

Test Project for 42nd WorldSkills Competition in Leipzig, Germany, 2013 Copyright 2012 © WorldSkills International. All Rights Reserved.			 world <b>skills</b> international	
Skill: MECHANICAL ENGINEERING DESIGN - CAD			Projection E ISO 5456-2	
Scale: 1:2	Date: 4/3/2013	Paper: A2		
Drawn / Design by: Autodesk Inc.			Drawing No: WSC2013_TP05_M4_MARK_E	
Description: PART			Rev: 0	Page: 1 OF 2
			Appd:	Sign:

